

# ROTARY ENCODERS

**TGR12**

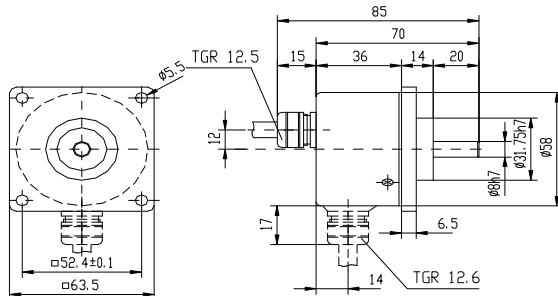
**Optoelectronic**

**12.3, 12.4, 12.5, 12.6**

The rotary encoder type TGR12 has the same electrical characteristic as rotary encoders types TGR10 and TGR11. The difference is in dimensions and in integrated flange.  
There are two basic versions: one with cable output and another one with connector output.

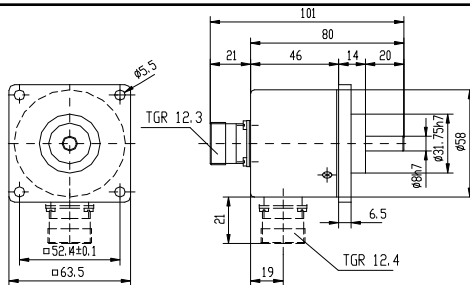
## Dimensions

### TGR12.5, 12.6



Cable length 3 m  
Permanent bending radius > 100 mm  
Single bending radius > 40 mm

### TGR12.3, 12.4



Cable length 3 m  
Permanent bending radius > 100 mm  
Single bending radius > 40 mm

## ORDERING DATA:(example : TGR12-X<sub>1</sub>-XX<sub>2</sub>-X<sub>3</sub>-XX<sub>4</sub>-XX<sub>5</sub>-XXXX<sub>6</sub>-X<sub>7</sub>-X<sub>8</sub>)

X <sub>1</sub>	<b>Version:</b>	3 ... connector, axial 4 ... connector, radial	5 ... cable axial 6 ... cable radial
XX <sub>2</sub>	<b>Supply voltage:</b>	05 ... 5V 12 ... 12V 30 ... 15-30V	
X <sub>3</sub>	<b>Output level:</b>	T ... TTL L ... CMOS, P...Push-Pull, C ... open collector S ... sine current	
XX <sub>4</sub>	<b>Output signals:</b>	DO ... A, B, RI DI,DS(RS422A): A, $\overline{A}$ , B, $\overline{B}$ , RI, $\overline{RI}$ SI ... I <sub>a+</sub> , I <sub>b+</sub> , I <sub>ri+</sub> , I <sub>a-</sub> , I <sub>b-</sub> , I <sub>ri-</sub>	
XX <sub>5</sub>	<b>Protection:</b>	64 ... IP64 65 ... IP65	
XXXX <sub>6</sub>	<b>No. of lines:</b>	Enter no. of lines (see mechanical data in Data Sheets for TGR11, TGR10)	
XX <sub>7</sub>	<b>Cable length:</b>	Standard 3 m : 03 Example: 1.5 m : 1.5 25 m : 25	
X <sub>8</sub>	<b>Connector is defined with electrical versions: DO, DI,DS or SI other type under special requirement</b>	1 ... Amphenol 12 pole 2 ... Amphenol 7 pole 3 ... Contact 9 pole (M screw) 4 ... Contact 12 pole (F screw) 5 ... Contact 9 pole (F screw) 6 ... Contact 12 pole (M-screw)	7 ... D-Sub 9 pole 9...other (specify) 0... without connector

**Iskra TELA** d.d.

**Iskra TELA** d.d.

**Measuring Systems**

Industrial automation programme, Tela Marketing  
Savska cesta 3, 1000 Ljubljana, SLOVENIA  
Direct Phone: +386 1 4733 196, 4733 299, 4733 263  
Phone: +386 61 137-43-33 Fax: +386 1 4375 124, +386 1 4375 516  
Direct Phone: +386 61 137-55-14 E-Mail: info@iskra-tela.si  
+386 61 1375-516  
Fax: +386 61 1375-124

