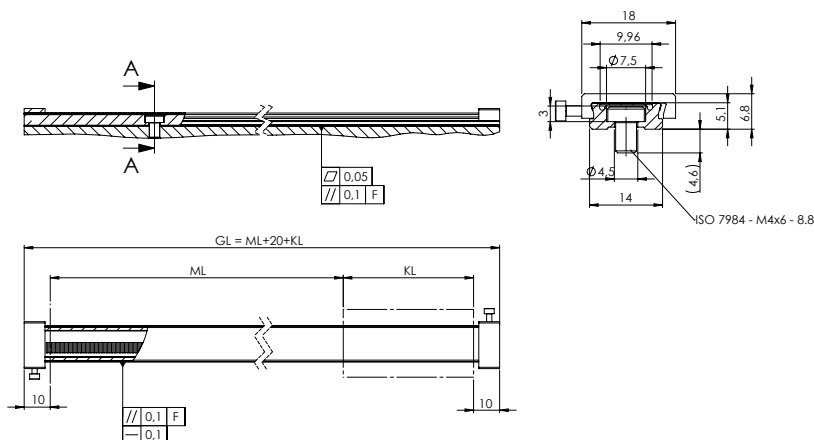
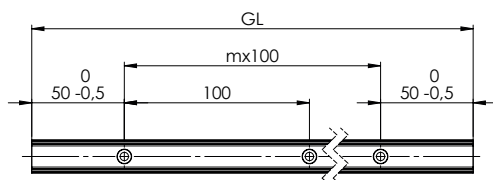


Scale tape in stainless steel carrier LMT 4005

- **Scale tape in stainless steel carrier, for modular linear encoders**
- **Grating period 500µm**
- **In combination with scanning head LMK 1005 or LMK 2005**



Single section carrier LMT 4005 C

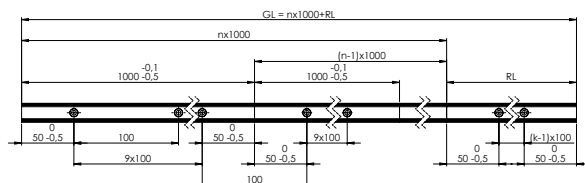


F = Machine guidance

$$GL = \text{Total length}$$

ML = Measuring length :

Multi section carrier LMT 4005 D



BF 20: ML = GL - 93mm

BF 21: ML = GL - 69m

BF 10/BF 12: ML = GL - 56mm

KL = Scanning head length :

BF 20 : 73mm

BF 21: 49 mm

BF 10 / BF 12 : 36 mm

Technical data

Incremental scale tape	LMT 4005		
Grating period	500µm		
Accuracy class	± 20µm/m	± 20µm/m	± 50µm/m
Accuracy after linear compensation	± 3µm/m	± 5µm/m	± 10µm/m
Total length GL	Standard length see ordering code		
Mechanical design	Stainless steel carrier with integrated scale tape		
Reference marks	Single or distance coded reference marks – Customized reference mark positions on request.		
Coefficient of expansion	~ 11ppm/K		
Mass	490 g/m Total length		

- LMT - Incremental scale tape in stainless steel carrier for modular linear encoders
- Grating period 500µm

