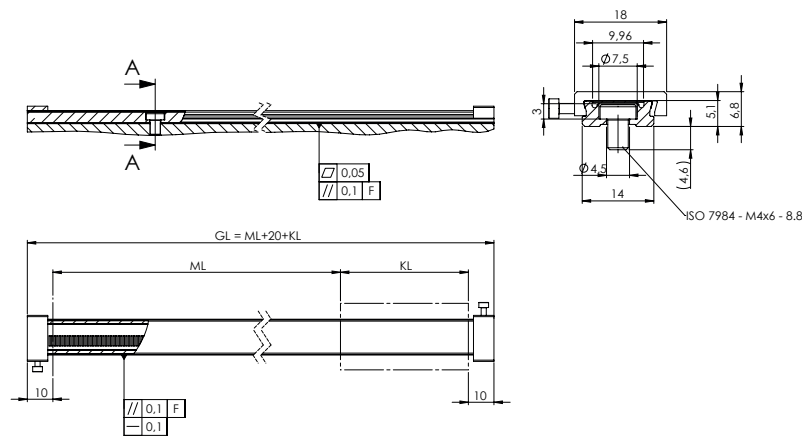
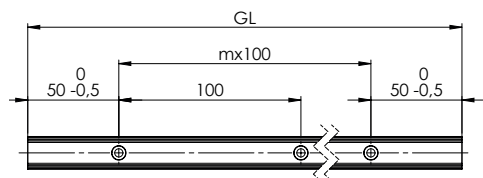


Scale tape in stainless steel carrier LMT 4010

- Scale tape in stainless steel carrier, for modular linear encoders
- Grating period 1000µm
- In combination with scanning head LMK 1010 or LMK 2010

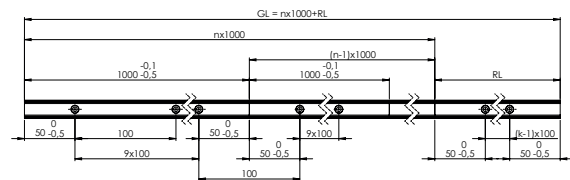


Single section carrier LMT 4010 C



- F = Machine guidance
GL = Total length
ML = Measuring length :

Multi section carrier LMT 4010 D



- BF 20 : ML = GL - 93mm
BF 21 : ML = GL - 69mm
BF 10/BF 12 : ML = GL - 56mm
KL = Scanning head length :
BF 20 : 73mm
BF 21 : 49 mm
BF 10 / BF 12 : 36 mm

Technical data

Incremental scale tape	LMT 4010		
Grating period	1000µm		
Accuracy class	± 20µm/m	± 20µm/m	± 50µm/m
Accuracy after linear compensation	± 3µm/m	± 5µm/m	± 10µm/m
Total length GL	Standard length see ordering code		
Mechanical design	Stainless steel carrier with integrated scale tape		
Reference marks	Single or distance coded reference marks – Customized reference mark positions on request.		
Coefficient of expansion	~ 11 ppm/K		
Mass	500 g/m Total length		

Ordering code

- LMT - Incremental scale tape in stainless steel carrier for modular linear encoders
- Grating period 1000µm

